

Welcome to the January 2024 issue of the Bromley Environment Network newsletter.

The Bromley Environment Network affectionately known as the BEN. We are a group of local Bromley community groups and organisations that share a belief that a greener and cleaner borough is good for everyone.

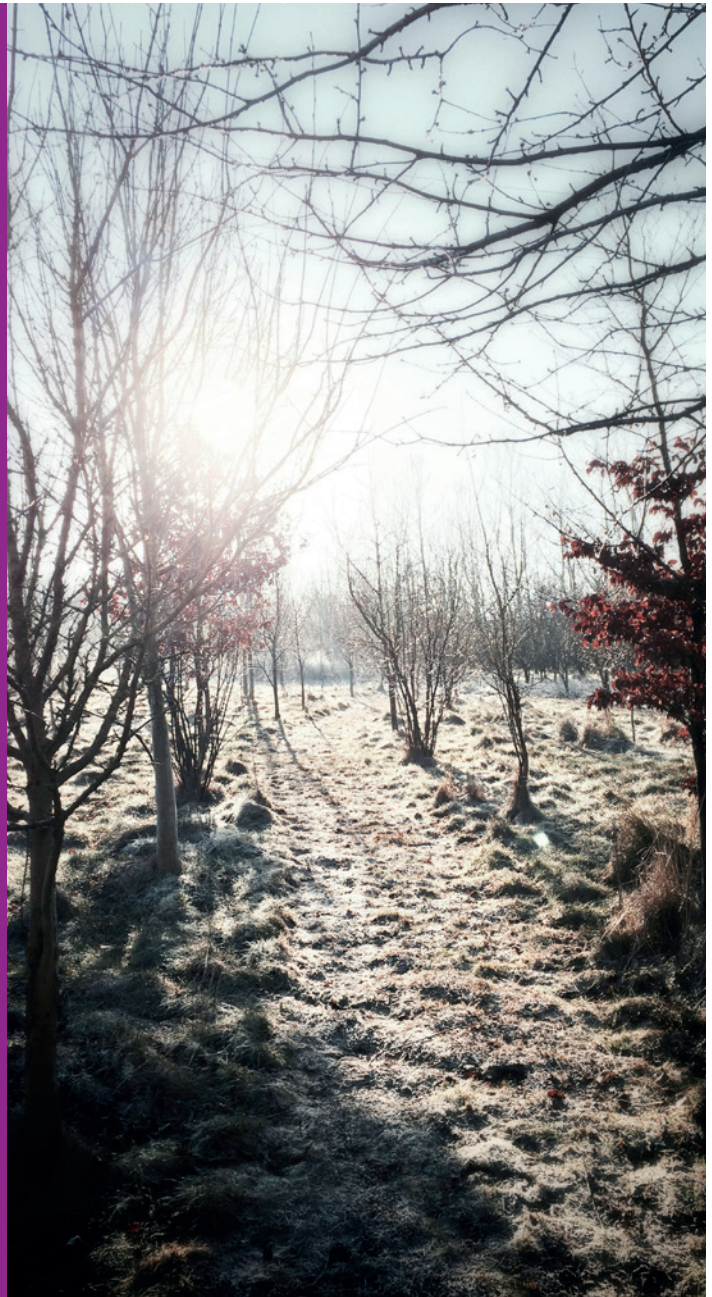
We aren't all eco-ninjas - but we do all think that the best way forward is establishing a useful local network to share interesting, helpful information amongst groups in the borough of Bromley to help make it a nicer place to live.

If you have any information you would like to share in the next newsletter then please email by **15 March 2024**.

Any events included should be for **01 April 2024** onwards.

Send to:

bromleyenvironmentnetwork@gmail.com



MAKE A DONATION

If you were interested in making a donation to help fund future issues, then please contact us at bromleyenvironmentnetwork@gmail.com



INSIDE THIS MONTH

BEN Member List	2
News from BEN members	2-8
Other News	9-10
Ben information	10
Dates for your diary	11-12

We aim to ensure that articles are correct at the time of publication. However, we advise that you check with organisers prior to travelling to events.

BEN MEMBERS LIST

- | | | |
|--|---|--|
| 1230 The Women's Company | Friends of Betts Park | Ravensbourne Valley Residents (RVR) |
| Biggin Hill Evening Women's Institute | Friends of Bromley Town Parks & Gardens | Rotary Bromley Game Changers |
| Birkbeck Community Initiative | Friends of Cator Park and Alexandra Recreation Ground | Rotary Orpington District E-Club |
| New Member ↑ | Friends of Chislehurst Recreation Ground (FOCRG) | RSPB Bromley Local Group |
| Bishop Challoner School | Friends of Crofton and Sparrow Woods | Saint Olave's Grammar School |
| BLG Mind | Friends of Darrick and Newstead Woods | SELCE |
| Bromley Buzz | Friends of Whitehall Recreation Ground | St Edward's Church, Mottingham |
| Bromley Civic Society | GoodGym Bromley | St Francis of Assisi, Petts Wood |
| Bromley Cyclists | Greener and Cleaner | New Member ↑ |
| Bromley Friends Forum | Greener Greenwich Community Network ← New Member! | St Mary of Nazereth Church, West Wickham |
| Bromley Friends of the Earth (BFOE) | Greenwich Sustainability Hub | St Paul's Church, Beckenham |
| Bromley Living Streets | Hayes School PTA | Start Up Bromley |
| Bromley Rotary Club | Kidical Mass | Successful Mums |
| Bromley Soroptimists' | Knoll Residents Association | The Chislehurst Society |
| Bromley YouthStrike4Climate | Lewisham Local | The Friends of Scadbury Park |
| Chislehurst Eco Community | Orpington Baptist Church | Tubbenden Friends Association |
| Copers Cope Area Residents Association | Package Less | West Beckenham Residents' Association |
| deafPLUS | Park Langley Residents Association (PLRA) | Woodland Mindfulness |
| Downham (Wesley Halls) Community Association | ParkBathe ← New Member! | |
| New Member ↑ | Penge Street Friends | |
| Downham Celebrates | Petts Wood Repair Cafe | |
| Eco Church Network Bromley | Ravensbourne Rotary Club | |
| Elmstead Woods Station Garden Club | | |
| EnBro | | |
| Environmental Action Coney Hall (EACH) | | |

SIGN UP FOR FREE!

www.membermojo.co.uk/ben
Share sustainability and environmental news and help spread the word of the amazing work by your organisation.

BEN MEMBER NEWS

Knoll Residents Association Creates Wildlife Haven from Christmas Trees

In a heartwarming and eco-friendly initiative, the Knoll Residents Association in Orpington collected 33 Christmas trees from residents to establish a new wildlife habitat in a local woodland. The creative project aims to repurpose these festive trees, giving them a second life that benefits the local environment.

Residents eagerly participated in the collection effort, contributing their used Christmas trees to the cause. The initiative not only fostered a sense of community but also showcased the residents' commitment to sustainable practices.

The collected trees were strategically arranged to form a natural habitat, providing shelter and refuge for various local wildlife species. As the seasons change, the transformed Christmas tree habitat will continue to evolve, attracting birds, insects, small rodents and other wildlife.



Working with friends of Coney Hall Park

Our young community orchard produced a good crop of fruit in the autumn so I think 2024 might be the year that we start our orchard related community celebrations. Sadly, idverde failed to cut and collect our meadow areas so we are hoping that this will not have affected the wildflowers and meadow grasses too much. We have been adding plugs and flowers such as Ox-eye Daisies from our own gardens as well as sowing yellow rattle and corn cockles so we are praying the unmown grass will not have overwhelmed them. The mini daffodils and snow drops should be emerging soon to give us all hope.

We have a new happy band of DoE youngsters joining us and our first activities will be to clean the nature trail boards and scallop the scrub areas. It is so important to us to have youngsters on board. We are about to embark on a new relationship with 'Parkbathe' which we hope will not only alleviate stress levels for local participants but will also introduce more people to the idea of preserving and promoting biodiversity in our locality.

We are also hoping to inspire the wider community via an EACH evening in February entitled 'Sharing ideas and tips for gardening for nature'. One thing I will be speaking about is the importance of scrub.

If you are interested in attending the evening and /or in joining our movement please contact me:
sarahlouisechant@ntlworld.com



Environmental Action Coney Hall

Each one of us can make a difference

Copers Cope Residents Association and North Copers Cope Road Action Group - local wildlife issue:

CPFC Academy are planning to add floodlights to a pitch parallel to a waterway (the River Pool) with wooded banks which is an important site for nature conservation as it is a habitat for bats and other native species. There are also bats in the gardens of residents backing onto the academy buildings and entry way. There is evidence of 6 bat species in the local area, at least 4 of those have been confirmed on site. CPFC submitted a desktop appraisal, through their consultants Middlemarch Environmental, which acknowledges the range of 6 bat species but suggests the bats are only 'somewhat light adverse'. Residents are concerned about the impacts on well loved local bats, birds and other native wildlife, particularly in darker winter months when the periods of floodlight use will be much longer. Local residents and other interested parties can comment on the planning for the floodlights on Bromley Councils website, the planning reference number is: **23/04907/FULL1**

<https://searchapplications.bromley.gov.uk/online-applications/>

Breathe London air quality monitor installed at Elmers End Free Church

On 20 January, Elmers End Free Church and Bromley Living Streets installed the first Breathe London Community Programme 'node' in London Borough of Bromley! This humble-looking device is a sophisticated air monitor that we hope will make a valuable contribution to the data and evidence about air quality on the streets of our Borough. To date we have collaborated with a range of local stakeholders to raise awareness of the health and environmental impact of air pollution, including residents associations, schools, religious organisations and local groups of Asthma and Lung UK. In future we hope to continue to work with local stakeholders to improve understanding of air quality and the different options for improving it. Please do reach out to us at

bromleygroup@livingstreets.org.uk to find out more



about our work on this important topic. The Breathe London air monitoring node will be installed at Elmers End Free Church (URC) on Goddard Road.

<https://bromleyls.org.uk/>

**BROMLEY
LIVING
STREETS**

RSPB Bromley Christmas wildlife quiz

The RSPB Bromley Local Group held a Christmas social with a wildlife quiz on the 13th December in the Verrell Hall Widmore Road, attended by nearly forty people including members of the RSPB and IDverde. This was in addition to normal monthly talks that we hold there the second Wednesday of every month. The team from IDverde won 1st prize.

Visit our website: group.rspb.org.uk/bromley/

Follow us on Facebook: facebook.com/rspbbromley

Follow us on Instagram: instagram.com/rspb_bromley



Bromley
local group



Eco Church Network is a series of meetings, helping eco-churches across Bromley get together, share knowledge and ideas, and hear inspiring talks. Travelling to different churches to see what different congregations are each doing on their patch.

Invitation to BEN Members

On 13th March 7-8.30pm, we will be hosting an event for the first time at The Greener and Cleaner Hub, The Glades, Bromley. The evening 'Engaging Parishioners and the wider Public on Sustainability and Climate' will hear from guest speaker Parisa Wright, Founder of Greener and Cleaner.

This event is open as usual to all churches and other faith groups in Bromley, but also to any BEN Members who would like to join us.

This is a FREE ticketed event for BEN Members who can [book here](#).

We look forward to you joining us!

For further details, please contact Ian Moore at ecochurchnetworkbromley@gmail.com

Orpington District E-Club City Challenge Walk

It's fun enjoying the open spaces in Bromley. Brenda, one of our Rotarians from the Orpington District E-Club, gathered neighbours together to create a team called The Burlington Wanderers, to take part in the English Cities Challenge Walk organised by Community Links Bromley. It was a great opportunity to enjoy our Open Spaces



and indeed communicate progress between neighbours in the pre Christmas winter months when we might not bump into each other. It was fun for dog walkers, the keen walkers and the novices. We celebrated finishing the walk in first place at the end of the challenge with a drink at the Black Horse, Locksbottom. A new challenge is soon to start. Get those walking shoes on and prepare to walk across Europe over 12 weeks!!

[Rotary Orpington District website](#)

Trevor geocaching

**JOIN COMMUNITY LINKS BROMLEY IN THE
BROMLEY NEW YEAR
WALK EUROPE
CHALLENGE**

Start the New Year with a bang! Our FREE charity sector virtual challenge will take us the length of Europe, taking in the history, heritage and highlights of the continent's contrasting cities. The mental and physical health benefits of walking are widely recognised. Walking can also help you feel part of your community and reduce loneliness and isolation. Join a team today and get moving.

Email Steve at fdo@communitylinksbromley.org.uk for more details on how to take part

12 WEEKS:
22 JANUARY 2024
TO
14 APRIL 2024

<https://commlinksbromley.bigteamchallenge.com/>



Greener & Cleaner

The great gift giveaway...

...and other ways to celebrate more sustainably this year. Now is a great time to think about what to do with gifts that weren't quite "you". If you're planning any celebrations in 2024 and want some sustainable help, please do get in touch. Meanwhile:

- Consider regifting and giving second-hand gifts.
- Send e-cards for your birthdays, anniversaries, congratulations and well wishes. Use [Greener and Cleaner's link here](#) for all occasions in return for a donation.
- Hire or borrow party sets. We have a dedicated group suitable for adults and children's parties with party sets, afternoon tea sets, plates, cutlery and pass the parcel sets that can be hired or borrowed: [Click here](#)
- Use upcycled decorations. Bunting using upcycled clothing fabric can make a colourful addition to any celebration.



Our Christmas Fair success

40 wonderful volunteers helped us to prepare and run our Christmas Fair 2023. With celebrity guests Paul Ready and Matthew Crosby opening the two day event, we celebrated with almost 2000 visitors which raised over £6000!

Going green for 2024

Greener and Cleaner are holding an online Get Started workshop on 30th January for anyone who is at the beginning of their climate journey - or who wants some simple steps they can take right now! Founder Parisa Wright, plus John Breach and Charlotte English will present a variety of actions that can be taken straight away and answer any questions you may have.

Book for this online event:

www.eventbrite.com/e/get-started-workshop-tickets-779356425047



Invitation to all BEN Members



We would like to invite you to a Bromley Environment Network Social & Sharing Event on Thursday 1st February from 6:30 to 8:30pm at our Community Hub upstairs in The Glades. This is a great opportunity for everyone to share knowledge, experiences and sustainability successes, and to build connections between community groups and charities across the borough.

Due to space restrictions, we ask for a maximum of 2 people from each organisation. We'll provide tea, coffee and some nibbles, but do bring extra bits if you'd like (No nuts please!)

Please RSVP to mark@greenerandcleaner.co.uk with who's coming from your organisation and any additional requirements.

We really look forward to seeing you!

Facebook:

[@GreenerCleanerBromley](#)
[@The Hub from Greener and Cleaner](#)

Instagram: [@reenerandcleanerUK](#)

Twitter: [@GreenercleanerB](#)

YouTube: [@greenerandcleaner](#)

Park Langley Residents' Association



Our Pollinator project is continuing into 2024

Last year we planted bulbs around street trees across the estate and are looking forward to them flowering again this year. With articles in the resident association newsletter and some door knocking and personal contact with residents in specific roads, we encouraged homeowners to look after the trees and to cultivate the tree pits with pollinator friendly plants. It was very encouraging to find the vast majority of residents were very supportive on the ideas with many trying to develop wild areas in their rear gardens already. In 2024 we are hoping to extend this targeted approach and will be able to offer wild flower seeds (some donated by local businesses) and some other small plants like lavender and verbena where suitable.

We also delivered flyers about nature friendly planting to encourage more pollinator friendly gardening practices and planting pollinator friendly plants in front gardens as well. These will be delivered to additional roads this year.

For 2024 we are also planning a residents gardening group to meet occasionally to look after some of the tree pits - especially those at the ends of roads which are not outside any specific property.

We were especially concerned about the Council's policies with regards to mowing the verges when they were full of wild flowers such as dandelions, so important for pollinators in the Spring, and spaying the gutters etc with herbicides to discourage plant growth on paved areas and have actively discussed these issues with officers and our local councillors.

<https://www.plra.org.uk>

SUCCESSFUL MUMS

Career Academy

Free Job Board for Local Businesses

Successful Mums Career Academy, the award-winning training company that supports parents back to work, has launched a new-look free of charge job board for Bromley businesses. Targeting women returners looking for flexible work, the job board enables forward-thinking companies to advertise vacancies to a talent pool of skilled parents. Businesses can register an account, post jobs and manage applications directly.

Successful Mums is committed to become greener. Being a paperless and online training provider, the team predominantly work from home, which in turn reduces emissions. The benefits of 'going green' are seeded across all training courses to highlight the positive impact on the planet and on individual's lives.

[Sign up here](#)



Mindfulness and forest bathing in urban parks

If your New Years resolution is to improve well-being and include active travel, ParkBathe can help. We operate in Crystal Palace park, Cator park, Priory Gardens, Stambourne Woods, South Norwood Lake and Grounds and Coney Hall.

A free ParkBathe walk combines mindfulness and forest bathing in urban parks, led by the community for the community. A one-hour ParkBathe is a great way to relax, de-stress, connect to nature (with all its health benefits) and see your park with new eyes. This encourages pro-environmental behaviour and signposts green volunteering.

Sessions are open to all adults 16+ with a maximum of 12 per group.

Check out our film and podcast plus the next ParkBathe dates and sign up!

<https://linktr.ee/parkbathe>



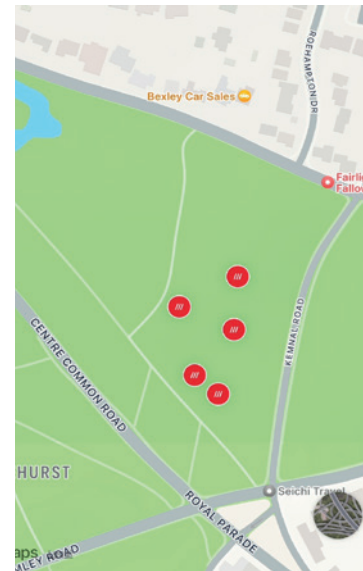
3D printed bird boxes in Chislehurst



The Chislehurst Society has 3D printed some recyclable bird boxes. They are available to sponsor for £15 each. In return sponsors, families, individuals or businesses will get a certificate with the What Three Words location of their box.

The first five have gone up on Chislehurst Common and we watch with interest to see if they attract residents or indeed if they are woodpecker proof!!

chislehurst-society.org.uk



Grow yourself with GoodGym Bromley!

Christmas 2023. The year the Christmas adverts told us to let our traditions grow. Keep the things we like, dump what we don't. New Year has its own traditions, including the resolution to get fit that we never seem to keep. This year, grow yourself with GoodGym. We're a running club with a purpose – to volunteer and help our communities. From popping up gazebos at Pengefest to planting bulbs ready for the Spring in Cator Park, our red t-shirts can be seen across the borough.

Our 'Crystal Palace' group meets at the Bridge House by Penge West station every Monday at 7pm for a short group run to a task that we can complete in half an hour, and then we run back. It's a great way to exercise with people in your local area, and there's always someone experienced at the rear of the pack to ensure that nobody gets left behind. We've also recently started up a 'Bromley Town' group with fortnightly sessions meeting on at 6.30pm every other Tuesday outside Greener And Cleaner's Hub in The Glades. The next Bromley Town meet will be 23rd January 2024.

We also do Community Missions, which can take place any time, where we meet directly at a task and get the job done. There's no shortage of variety at GoodGym – one week you can help out at the Living Well Food Bank, the next you could be manning a stall at Paws in the Park.

It's commitment-free, social and rewarding – Can you get that from a brick-and-mortar gym? In 2024, keep your traditions growing. Join GoodGym. Sign up at goodgym.org



Silver Award of Eco Church

St. Francis of Assisi Church, Petts Wood has achieved the Silver Award of Eco Church: the A Rocha award scheme for churches in England and Wales who want to protect God's earth. As part of this scheme we have installed solar panels on the westward facing roof of the church hall, to reduce both our energy costs and, importantly, our usage of fossil fuel.

ecochurch.arocha.org.uk



Birkbeck Community Initiative

Birkbeck Community Initiative was set up in July 2020, between lockdowns in that strange year, when there was a focus on our local environment. Much of the group's activities have centred on an area at the junction of Elmers End Road and Ash Grove SE20 which is a busy and highly polluted area, previously wasteland used for fly tipping and littered with rubbish and dog mess.



In July 2020 a group of us, including two of our ward councillors, met to clear the land, now named Birkbeck Community Garden. A mown grass path was created through

the greenspace near the hoardings. Further events followed with bulb planting every Autumn and this October we planted 50kg of daffodils and 700 Camassia quamash.



The greenspace has been sown with various wildflower mixes and it was good to see bees and butterflies busy amongst the wildflowers this summer.



<https://www.facebook.com/groups/323423872416731>

GREENER GREENWICH COMMUNITY NETWORK



who we are and what we do

Who we are



A network of almost 50 likeminded individuals, community groups and organisations striving to make Greenwich a safe, clean and green place to live, work and thrive. Together, our current networks extend to 1,500 Greenwich residents and beyond.

What we do

We aim to provide a strong and cohesive community voice on green issues across the borough. We do this by:

- Campaigning on issues important to the Network - through attending council meetings to ask questions, running petitions, responding to consultations on housing, planning, air quality and more.
- Running pilot projects to generate evidence on what works to make our borough greener, cleaner and safer
- Running community awareness raising workshops and events



How you can get involved



- Join our monthly meetings and / or the mailing list to receive updates from the Network: ggcommunitynetwork@gmail.com
- Get involved in the Accountability Hub or Chemical free streets pilot
- Share your ideas for other projects and campaigns the Network could lead: ggcommunitynetwork@gmail.com

We need all sorts of skills to make this Network thrive! If you love writing come and help us blog. If you're good with design help make our social channels and materials have more impact. If you have a space we can use for free or low cost for meetings, let us know! Every little helps.



Email GGcommunitynetwork@gmail.com for more details or visit the website: <https://greenwichclimatene.wixsite.com/climatene>

With inspiration from the Bromley Environment Network, The Greener Greenwich Community Network has launched and are offering this FREE event which is accessible to Bromley residents and organisations.

Greener Greenwich Community Network - Biodiversity Event

Venue: Charlton Park, Carers Centre

Cost: Free event but donations welcomed.

When: 17 Feb 2024

Keynote speakers:

Pollinating Greenwich: Dr. Konstantinos Tsiolis from the project "Pollinating London together"

Russell Miller: sharing experience of "Tree Musketeers" in Hackney

Workshops & discussion groups:

Biodiversity

- Pollination including insect ID
- Growing Good Food- GCDA - presentation & discussion on local food growing
- Glyphosate versus opt out and residents weeding their own streets

Arts and Engagement

- Developing Site specific Storytelling and Story Walks
- Amanda Tuke TBC - urban nature writing workshop

Skills and Knowledge Exchange

- Seed Swap
- Asian Hornet
- Recruitment and retaining Volunteers

Plus more TBC

Other News

Road use in Bromley Borough

www.healthystreetsscorecard.london have been in touch to ask the Bromley Environment Network's members which issues around road use in Bromley Borough concern them the most (i.e. what one thing would you want improved, increased or decreased in 2024). There are 3 issues they have highlighted alongside the council's stated support for them in principle:

1) 20mph outside all school main entrances

Bromley Council state on their website: "The Council will install part-time 20mph limits at the beginning and end of the school day with flashing lights outside schools, decided on merit."



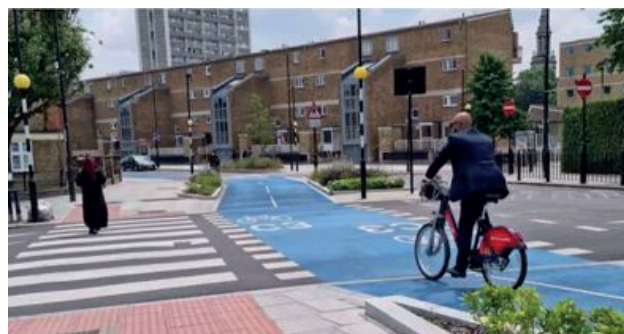
Reasons why this is important, and worth building upon for schools who need this support:

- People hit by a vehicle travelling at 30mph are **four times more likely to die** than those hit at 20mph.
- Reducing the speed limit from 30mph to 20mph typically results in **more than 20% fewer casualties**.
- For people cycling, the introduction of 20mph limits (alone) is linked to **21% lower injury odds** compared to 30mph roads.
- Even small reductions in speed make a difference. Each 1mph reduction in average traffic speed is associated with a **6% reduction in collisions**.
- Lower speed limits improve public health by encouraging more people to be active or to walk and cycle.
- Fear of motor traffic is one of the biggest reasons why people choose not to cycle, with 44% of people saying they would cycle more if the roads were safer and 26% who would travel less by car if the conditions for walking locally were better. ([Parliamentary Environmental Audit Select Committee Written Evidence](#))
- Trials of 20mph limits in Edinburgh found that the proportion of children cycling to school rose from 4 percent to 12 percent in 20mph zones.
- Lower speed limits **cut noise and air pollution**.

2) Town Centre improvements supporting people to walk & cycle to town centres e.g. with pedestrian improvements and cycle parking in line the council's [Town Centre improvement plans](#)

- Improvements such as widening of the footways and/or implementation or improvement of pedestrian crossing points and tactile paving make it easier for pedestrians to cross roads, particularly for people with mobility issues, visual impairments and who are elderly.
- More pedestrianised areas, and places to sit/stop, which also help boost local businesses - data on streets where the pedestrian experience has been improved shows footfall increasing 20-35% (<https://www.livingstreets.org.uk/policy-reports-and-research/high-streets-1/>).
- Clearly signed (and ideally physically protected and separated) cycle paths and crossings helping people get safely into town centres once nearby.
- Additional cycle parking provides formal/secure places for cyclists to lock their cycles, reducing obstructive locking of cycles to fences or poles.

- Uncluttered pavements for those with mobility needs or buggies.
- Lighting, security and signage.
- Such proposals support the objectives of improving road safety (<https://tfl.gov.uk/corporate/publications-and-reports/road-safety>), promoting the use of active travel and improving local air quality - and boost local retail and leisure businesses.



3) More connected cycle routes (and walking routes)

- **Bromley Council state** on their website "We are looking to develop a range of opportunities to improve cycling provision in the borough, including expanding and improving the current network of cycle routes and developing more "Greenways", corridors where walking and cycling can be enjoyed without traffic."
- The current [borough cycle map](#) shows many areas of Bromley are not accessible by safe cycling routes for **8- to 80-year-olds** to cycle on.
- Creating more connected, direct and accessible walking and cycling routes will help create more active communities. Providing high quality and safe pathways is a key instrument in ensuring that cycle and walking routes are effectively utilised. See [Sustrans position on cycling and walking networks and routes](#).
- This would improve road safety and broader public health (quality of local air and levels of physical activity), and of course carbon emissions across the borough when done to a high quality (i.e., connected routes and protected tracks etc).

Please vote in the Poll below by 6th February for the area on which your group would most like to see progress in road safety and sustainability or add an alternative under 'other'. URL link to single question poll: <https://t3c0hi3om7x.typeform.com/to/vR8OdS6V>

The Healthy Streets Scorecards team will feedback on which was the most popular area for improvement and then make suggestions on how groups and individual residents might support progress in these areas.

Thanks in advance for your input! Here's to making Bromley a greener, healthier, more sustainable and more community focused place to live now, and in the future.

Other News cont.

London Borough of Bromley News

The London Borough of Bromley & idverde UK are collaborating on the Council's Sustainable Planting Trial - ten existing flowerbeds have been planted with a mix of shrubs, flowering plants and herbs.

The regenerative planting programme being trailed will create enhanced habitats for pollinators and insects (& expensive, need less watering/maintenance).

Hopefully it will see lots of support across the borough, so it can be extended.

Please complete and share the Sustainable Planting Trial SURVEY by visiting: www.bromley.gov.uk/SustainablePlanting

USEFUL BEN INFORMATION



JOIN FOR FREE

www.membermojo.co.uk/ben

The Bromley Environment network brings together community groups from across Bromley Borough. We aim to share information, inspire and support local people, fellow community groups, and the Council to make our borough a greener, healthier and more sustainable place to live, both now and in the future.

Make sure you hit this final button to ensure your sign up is complete.



DOWNLOAD PAST NEWSLETTERS



This newsletter as well as previous copies, can be downloaded from our website: bromleyenvironmentnetwork.org.uk

NEWSLETTER DEADLINE

We would love to hear what network members have been up to. Please email your articles by **15 Mar 2024**. Any events included should be for **01 April 2023** onwards.



DATES FOR YOUR DIARY

February



February

Show The Love campaign all month by The Climate Coalition

Hosted by Greener and Cleaner at The Hub The Glades, Bromley BR1 1DN - [Details](#)

Mon 5 February

12:00 Greener and Cleaner - Knitting and Crochet Group

The Hub, The Glades, Bromley BR1 1DN
[Book online](#)

19:00 GoodGym Bromley

Penge West station - [Details](#)

Sun 11 February

11:00 - 12:00 ParkBathe stroll

in Cator Park Aldersmead Road
Beckenham BR3 1NA [Book online](#)

11:30 Learn to use a Sewing

Pattern The Hub, The Glades, Bromley
BR1 1DN [Book online](#)



Fri 16 February

11:00 - 13:00 Greener and Cleaner - Rag Rugged Heart

The Hub, The Glades, Bromley BR1 1DN
[Book online](#)

12:30 Greener and Cleaner - Climate Cafe with Daisy

The Hub, The Glades, Bromley BR1 1DN
[Book online](#)

19:00 Greener and Cleaner - Book Club

The Hub, The Glades, Bromley BR1 1DN - [Book online](#)

Tues 20 February

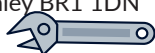
18:30 GoodGym Bromley

Greener and Cleaner at The Hub The Glades, Bromley BR1 1DN
[Details](#)

Sat 24 February

12:00 - 14:00 Greener and Cleaner - Mending Clinic

The Hub, The Glades, Bromley BR1 1DN
[Book online](#)



Thurs 1 February

18:00 BEN Member Social and Sharing Event

Hosted by Greener and Cleaner at The Hub The Glades, Bromley BR1 1DN

Tues 6 February

18:30 GoodGym Bromley

Greener and Cleaner at The Hub The Glades, Bromley BR1 1DN - [Details](#)

Fri 9 February

10:30 Baby & Toddler Group with Reusable Nappies Workshop and Parent Coach

The Hub, The Glades, Bromley BR1 1DN
[Book online](#)

Mon 12 February

12:00 Greener and Cleaner - Knitting and Crochet Group

The Hub, The Glades, Bromley BR1 1DN
[Book online](#)

14:00 Greener and Cleaner - Half Term T-Shirt Painting Workshop

The Hub, The Glades, Bromley BR1 1DN
[Book online](#)

19:00 GoodGym Bromley

Penge West station - [Details](#)

Sat 17 February

Random acts of kindness day

[Book online](#)

Greener Greenwich Community Network - Biodiversity Event

Charlton Park, Carers Centre
[Email GGcommunitynetwork@gmail.com](mailto:GGcommunitynetwork@gmail.com)

12:00 - 14:00 Greener and Cleaner - Mending Clinic

The Hub, The Glades, Bromley BR1 1DN
[Book online](#)

Sun 25 February

11:00 - 12:30 ParkBathe stroll in Priory Garden

Church Hill, Orpington, Bromley BR6 0HH
[Book online](#)

11:00 - 12:30 ParkBathe stroll in South Norwood Lake & Grounds

Sylvan Road London SE25 4AN
[Book online](#)

Sat 3 February



12:00 - 14:00 Greener and Cleaner - Mending Clinic

The Hub, The Glades, Bromley BR1 1DN
[Book online](#)

8 - 19 February

RSPB Big Schools Bird Watch

The Hub, The Glades, Bromley BR1 1DN
[Details](#)

Sat 10 February

12:00 - 14:00 Greener and Cleaner - Mending Clinic

The Hub, The Glades, Bromley BR1 1DN
[Book online](#)

Wed 14 February

19:00 RSPB Talk

Verrall Hall, United Reformed Church,
Widmore Rd, Bromley, BR1 1RY [Details](#)

Sun 18 February

13:00 - 15:00 Greener and Cleaner - Ikigai 2-part Memory Bear Making Workshop

The Hub, The Glades, Bromley BR1 1DN
[Book online](#)

14:00 - 15:30 ParkBathe stroll in Coney Hall

Church Drive BR4 9JJ [Book online](#)

Mon 19 February

12:00 Greener and Cleaner - Knitting and Crochet Group

The Hub, The Glades, Bromley BR1 1DN
[Book online](#)

15:00 People, Planet, Pastry

The Hub, The Glades, Bromley BR1 1DN
[Book online](#)

19:00 GoodGym Bromley

Penge West station - [Details](#)

Mon 26 February

12:00 Greener and Cleaner - Knitting and Crochet Group

The Hub, The Glades, Bromley BR1 1DN
[Book online](#)

19:00 GoodGym Bromley

Penge West station [Details](#)

March

Sat 2 March

12:00 - 13:00 Greener and Cleaner - Mending Clinic

The Hub, The Glades, Bromley BR1 1DN
[Book online](#)



Tues 5 March

18:30 GoodGym Bromley

Greener and Cleaner at The Hub The Glades, Bromley BR1 1DN
[Details](#)

Sun 10 March

11:00 - 12:30 ParkBathe in Cator Park Aldersmead Road Beckenham BR3 1NA

[Book online](#)

Mon 11 March

12:00 Greener and Cleaner - Knitting and Crochet Group

The Hub, The Glades, Bromley BR1 1DN
[Book online](#)



19:00 GoodGym Bromley

Penge West station - [Details](#)

Sat 17 March

11:00 - 12:30 ParkBathe in Priory Garden Church Hill, Orpington, Bromley BR6 0HH

[Book online](#)

Sat 23 March

12:00 - 13:00 Greener and Cleaner - Mending Clinic

The Hub, The Glades, Bromley BR1 1DN
[Book online](#)



Mon 25 March

12:00 Greener and Cleaner - Knitting and Crochet Group

The Hub, The Glades, Bromley BR1 1DN
[Book online](#)

19:00 GoodGym Bromley

Penge West station - [Details](#)

Sun 3 March

14:00 - 16:00 Shwapping Not Shopping - Clothes Swap Event

The Hub, The Glades, Bromley BR1 1DN
[Book online](#)

Fri 8 March

10:30 - 13:00 Baby & Toddler Group with Reusable Nappies Workshop and Parent Coach

The Hub, The Glades, Bromley BR1 1DN
[Book online](#)

12:30 Greener and Cleaner - Climate Cafe with Daisy

The Hub, The Glades, Bromley BR1 1DN
[Book online](#)

Wed 13 March

19:00 - 20:30 Eco Church Networking Event

The Hub, The Glades, Bromley BR1 1DN
[Book online](#)

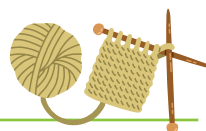
19:00 RSPB Talk

Verrall Hall, United Reformed Church, Widmore Rd, Bromley, BR1 1RY [Details](#)

Mon 18 March

12:00 Greener and Cleaner - Knitting and Crochet Group

The Hub, The Glades, Bromley BR1 1DN
[Book online](#)



15:00 People, Planet, Pastry

The Hub, The Glades, Bromley BR1 1DN
[Book online](#)

19:00 GoodGym Bromley

Penge West station - [Details](#)

Sat 30 March

12:00 - 13:00 Greener and Cleaner - Mending Clinic

The Hub, The Glades, Bromley BR1 1DN
[Book online](#)



Mon 4 March

12:00 Greener and Cleaner - Knitting and Crochet Group

The Hub, The Glades, Bromley BR1 1DN
[Book online](#)

19:00 GoodGym Bromley

Penge West station - [Details](#)

Sat 9 March

12:00 - 13:00 Greener and Cleaner - Mending Clinic

The Hub, The Glades, Bromley BR1 1DN
[Book online](#)

Sat 16 March

12:00 - 13:00 Greener and Cleaner - Mending Clinic

The Hub, The Glades, Bromley BR1 1DN
[Book online](#)

19:00 - 20:30 Greener and Cleaner - Book Club

The Hub, The Glades, Bromley BR1 1DN
[Book online](#)

Tues 19 March

18:30 GoodGym Bromley

Greener and Cleaner at The Hub The Glades, Bromley BR1 1DN
[Details](#)

Sun 24 March

13:00 - 15:00 Greener and Cleaner - Sustainable Wedding Planning

The Hub, The Glades, Bromley BR1 1DN
[Book online](#)

14:00 - 15:30 ParkBathe stroll in Coney Hall Church Drive BR4 9JJ

[Book online](#)

Sun 31 March

11:00 - 12:30 ParkBathe stroll in South Norwood Lake & Grounds

Sylvan Road London SE25 4AN
[Book online](#)