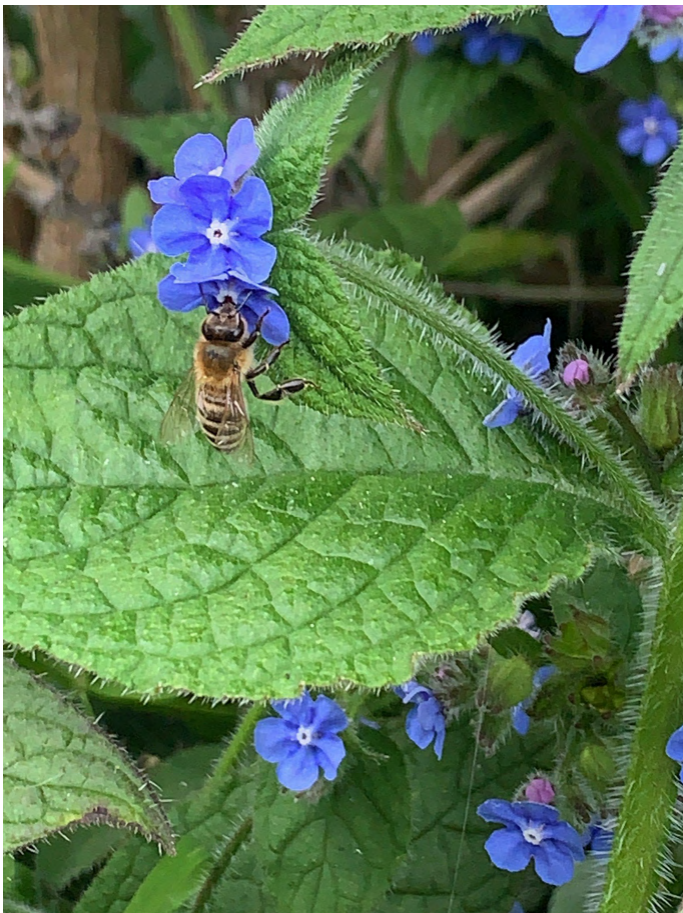




BROMLEY ENVIRONMENT NETWORK

May 2023



WELCOME!

Welcome to the March 2023 issue of the Bromley Environment Network newsletter.

The Bromley Environment Network affectionately known as the **BEN**

We are a group of local Bromley community groups and organisations that share a belief that a greener and cleaner borough is good for everyone.

We aren't all eco-ninjas - but we do all think that the best way forward is establishing a useful local network to share interesting, helpful information amongst groups in the borough of Bromley to help make it a nicer place to live.

If you have any information you would like to share in the next newsletter then please email by:

15 June 2023

Any events included should be for **01 July 2023** onwards.

Send to: bromleyenvironmentnetwork@gmail.com

INSIDE THIS MONTH

BEN Member List	3
News from BEN members	4
Other News	16
Useful information	20
Dates for your diary	21

We aim to ensure that articles are correct at the time of publication. However, we advise that you check with organisers prior to travelling to events.



BEN MEMBERS LIST

1230 The Women's Company
BLG Mind
Bromley Buzz
Bromley Civic Society
Bromley Cyclists
Bromley Friends Forum
Bromley Friends of the Earth (BFOE)
Bromley Living Streets
Bromley Rotary Club
Bromley Soroptimists'
Bromley YouthStrike4Climate
Chislehurst Eco Community
Chislehurst Society
Copers Cope Area Residents Association
deafPLUS
Downham Celebrates
Eco Church Network Bromley
EnBro
Environmental Action Coney Hall (EACH)
Friends of Betts Park **New Member!**
Friends of Cator Park and Alexandra Rec Ground
Friends of Chislehurst Recreation Ground (FOCRG)
Friends of Crofton and Sparrow Woods **New Member!**
GoodGym Bromley
Greener and Cleaner
Greenwich Sustainability Hub
Hayes Life
Hayes Primary School PTA
Hayes School PTA
Kidical Mass
Knoll Residents Association
Lewisham Local
Orpington Baptist Church
Package Less
Park Langley Residents Association (PLRA)
Penge Street Friends
Ravensbourne Rotary Club
Ravensbourne Valley Residents
Rotary Bromley Game Changers **New Member!**
Rotary Club of Langley Park
RSPB Bromley Local Group
SELCE
St Edward's Church, Mottingham **New Member!**
St Mary of Nazereth Church, West Wickham
St Paul's Church, Beckenham
Start Up Bromley
Successful Mums
The Friends of Scadbury Park
Tubbenden Friends Association
West Beckenham Residents' Association
Woodland Mindfulness

SIGN UP FOR FREE!

www.membermojo.co.uk/ben

Share sustainability and environmental news
and help spread the word of the amazing work
by your organisation.

MEMBER NEWS

FRIENDS OF BETTS PARK

FRIENDS OF
BETTS PARK



Friends of Betts Park is a small community voluntary organisation caring for Betts Park in Anerley SE20, at the very northern end of the borough. The park opened in 1928 and extended in 1939 – that’s pretty much all that was known when the Friends group began in 2019. But this seemingly ‘modern’ park was hiding secrets dating back over 1000 years to the ancient Penge Common.

Like most parks there’s grassy bits, wooded bits, a playground, ball courts, paths and benches, even an outdoor gym. A good variety of birds tweet in the day, foxes stalk the rubbish bins at night, and grey squirrels abound doing what grey squirrels do best – burying food and digging it up again! Oh, and there’s a canal – the Croydon Canal to be precise – with newts, fish, mallards, moorhens and the occasional Egyptian geese.

Although Betts Park officially began with a gift of the land by Frederick Betts in 1928, Friends of Betts Park launched an investigation to figure out why some of the trees were 200 years old and how the last canal in south London ended up here. Alan Pottinger, secretary of the Friends said: “We started by talking with older people who grew up here. Some remembered the bombing during WW2 and an air-raid shelter

under the canal bridge. Others recalled the old library, now gone, and when the park was doubled in size by King George V.”

Further research uncovered a story going back over 1000 years from when the Saxon King Eadwig gave Penge Common to Battersea, through many years of the park being used as a common copse; Earl Spencer flogging off the land; an old woman refusing to budge; a canal doomed to failure; a Scotsman beginning the settlement of Anerley; and a special oak tree that never drops its leaves.

In the last 1000 years Betts Park has served the community as a common space, with just 50 years enclosed. It is the only public space in Bromley protected by deeds that prohibit any development in perpetuity – thank you King George V!

Now we know where it’s come from, we can help design the future to ensure it’s open, free and thriving for the next generations. We’re starting with preserving what’s here; cleaning the canal, feeding the trees and letting the wildflowers flourish. Volunteers are always welcome, see www.bettspark.com.

Continued...

Free guided walking tours exploring the history of Betts Park are taking place every Saturday in June as part of the London Festival of Architecture and Penge Festival. To book a free ticket simply search "Betts Park" at Eventbrite.co.uk or follow the link:

<https://www.eventbrite.co.uk/e/in-common-on-the-common-betts-park-anerley-se20-tickets-594732098717>



BROMLEY ROTARY CLUB

Passport Clubs are a new concept in Rotary which cater to those who do not have the time to meet every week but who still wish to have a way of contributing within their local community.



BROMLEY ROTARY PASSPORT CLUB

People of Action

Find out more at:

<https://www.rotary-ribi.org/clubs/page.php?PgID=870105&ClubID=699>



Bromley Rotary Passport often work with other charities with matching aims. This month saw Bromley Rotary Passport support West Wickham Village Day on 1st May 2023 in collaboration with Friends of Blake Park and West Wickham Rotary, helping with the litter picking to keep the event clean and tidy for visitors to enjoy the event.

The TCS London Marathon introduced waste stations to improve recycling and compost rates, staffed by teams of dedicated volunteers. Their aim is to reduce waste to incineration by 50% across all of their events. Bromley Rotary Passport assisted with the London Marathon Waste management activities along side Greener and Cleaner on 23rd April 2023.



ST PAUL'S BECKENHAM: Climate & Ecology

Tens of thousands turn out for 'the Big One'

Tens of thousands – an estimated 20,000 on the first day, and 50,000 over the course of the weekend – turned out for the Big One. Organised and supported by 200 groups including Greenpeace, Tearfund, Friends of the Earth, Christian Aid and many others, the Big One called on government to act on climate breakdown.

Members of St Paul's and Neighbourhood Church led a ten-mile walk from Beckenham to Parliament Square and St John's Waterloo. We started with 8 from Neighbourhood Church, were 16 by the time we left Clock House and over 100 by the time we reached Parliament Square. Fluttering flags, leaflets and a growing group attracted attention. We had great

conversations with people and (presumed to be!) supportive beeps from passing cars. Many thanks to all who walked with us!

At St Paul's we're keenly aware that the large scale change we need is only achievable if governments act decisively, at scale and with urgency. It's simply not good enough to say we've done our bit – changed our heating and lighting, changed what we eat – got our own house in order. For our kids, for those whose crops are withering today, we need to call on government to step up.

Did the Big One catalyse the change? On its own, we don't think so. But it added a stone to the scales, drops to the waterwheel. Many stones sway the scales, many drops turn the wheel. We pray that change may come in time.



GOODGYM BROMLEY

GoodGym has a mantra of getting fit by doing good, using literal people power to make a difference in their local community. They see energy burned in a gym as a bit of a waste and instead want to see those miles on a treadmill used for social good!



GoodGym Bromley are about to start working with Slow Ways and Move The Masses, two organisations who have active travel at their heart. Slow Ways are creating a UK-wide map of walking routes between 'settlements' with the intention of getting people to use their feet rather than jumping in the car. Move The Masses are working on a similar map, plotting where all the outdoor gyms in the UK are, making exercise cheap and in much less sterile environments than where you'd find your usual rowing machine!



CONTACT GOODGYM BROMLEY

Website: www.goodgym.org/bromley

Contact Tel: 07963 081967

If you, or someone you know is into running, tell them to get involved! In the next few weeks, we'll be listing sessions on our website to verify Slow Ways routes and lists what equipment can be found at our local outdoor gyms.



SIGN UP AT:

**[www.goodgym.org/
areas/bromley](http://www.goodgym.org/areas/bromley)**

www.facebook.com/goodgym

www.twitter.com/goodgym

www.instagram.com/goodgym

BROMLEY FRIENDS FORUM

The Friends of Keston Common in collaboration with the Keston Residents Association are hosting an event on Saturday 24th June 2023. Friends of Keston Common will have a stall with the aim to promote themselves and spread the biodiversity message to visitors. Stop by and pay them a visit!



THE KVRA PRESENTS
"KESTFEST"
KESTON VILLAGE FESTIVAL
2023

A celebration to bring family & friends together

KESTON VILLAGE GREEN

24th JUNE 2023

1pm -6pm

BRING A PICNIC (OR JUST A BLANKET)

LIVE ENTERTAINMENT

FOOD STALLS

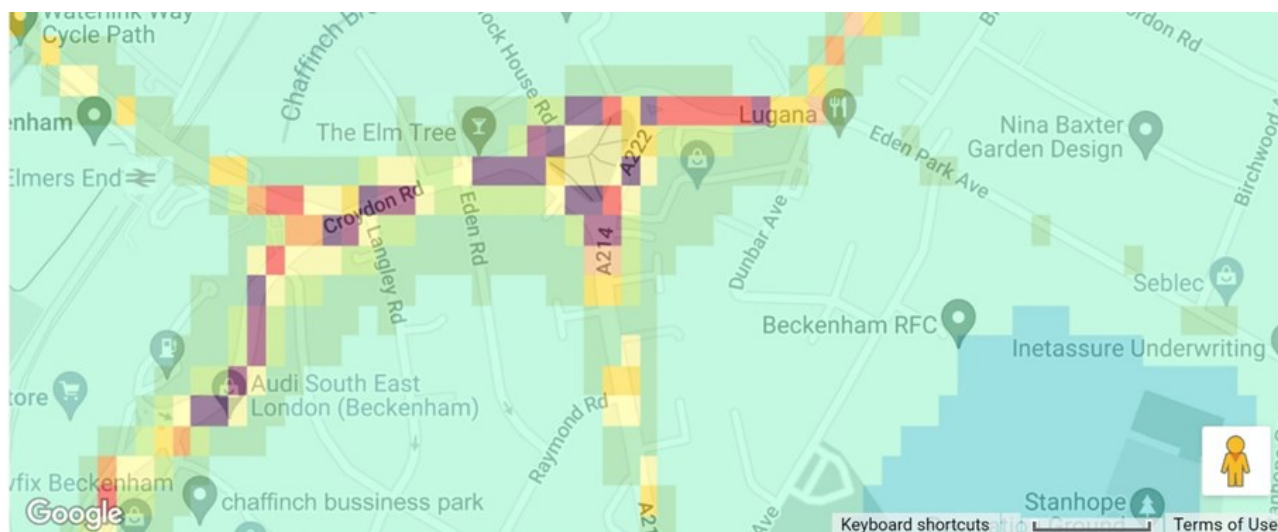
SHOPPING

DOG SHOW & DOG AGILITY

FUN STALLS



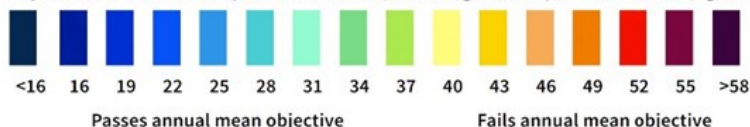
BROMLEY LIVING STREETS



Modelled annual mean NO₂ air pollution, based on measurements made during 2016.

This map was used with permission from The Greater London Authority and Transport for London, who fund, develop and maintain the London Atmospheric Emissions Inventory. For more information please visit data.london.gov.uk

Key: Annual mean NO₂ air pollution for 2016, in microgrammes per metre cubed (ug/m³)



Cough cough! Clean Air Day 2023

The purpose of this article is to tell you about activities planned in Bromley for Clean Air Day, and to ask you to get involved by writing to bromleygroup@livingstreets.org.uk. Clean Air Day 2023 takes place on 15 June so we look forward to hearing from you soon!

Did you know that every year, air pollution causes up to 36,000 deaths in the UK? The World Health Organisation and the UK Government recognise that air pollution is the largest environmental health risk we face today. Clean Air Day is the UK's largest air pollution campaign. It is a campaign delivered across the UK, with actions by local authorities, schools, health professionals, campaign and community groups and individuals.

[Bromley Living Streets](#)¹, exists to try to make Bromley's streets safer for people who want to travel from A to B on foot or bicycle rather than by car. If more people did this, air quality on our main roads would be better, so part of our organisation's work involves engaging with schools and other community organisations interested in air quality in their area. We have monitored air quality at 5 Bromley schools and will soon be setting up monitors at more schools as well as a large air monitor at one of the most polluted road junctions in the borough.

Air pollution on major roads in Bromley is a major problem. The image attached to this article shows air pollution levels at Elmers End gyratory; further information can be found at <https://www.londonair.org.uk/london/asp/annualmaps.asp>.

For Clean Air Day 2023, we want to encourage residents to talk to each other and to their local elected representatives about air quality and why it matters. We are promoting [Global Action Plan's campaign to get residents to write to their councillors](#) ², and are organising an online webinar on 15 June 2023 to bring together residents and councillors (details will be shared on our website in the coming weeks; do write to us if you want us to let you know when plans get finalised!).

We are also trying to bring together residents' groups focused on air quality issues and would love to hear from you if this is something you work on or something that concerns you.

More green for the Bromley Buzz podcast

The Bromley Buzz podcast:

See www.bromleybuzz.uk and listening links there – continues to have a 'green dimension'.

A recent interview was with SELCE, a community energy group tackling climate change and fuel poverty across South East London.

LISTEN TO EPISODE 105:

<https://open.spotify.com/episode/4hnJw097roQP06ajeq6XcP>

We are in touch with two local community groups supporting Bromley residents struggling with Asthma (you can contact them by writing to younglungsbroemley@gmail.com and bert29@hotmail.com; (Bert runs Breathe Easy Bromley)).

We are also in touch with residents concerned about the expansion of Biggin Hill Airport: not much to do with roads, but what we share with those campaigners is concern about the impact on air quality and climate change that results from increased numbers of flights. We look forward to hearing from you.

¹ <https://bromleyls.org.uk/>

² <https://www.globalactionplan.org.uk/news/clean-air-day-launches-resources-for-15-june-2023-campaign>



BROMLEY BUZZ



KNOLL PARK RESIDENTS ASSOCIATION

Sustainability Focused Coronation Street Party

Knoll Residents Association hosted the biggest coronation celebration in the borough with 700 residents and almost everything was borrowed for the day (rather than bought), from PA systems to tea urns to bunting to gazebos to the outdoor games and activities put on by the community (archery, volley ball, tug of war etc).

Maximum recycling was arranged and absolutely no litter was left behind! Their stunning aerial photos even hit the national press and media - BBC, ITV and most newspapers!



Check them out on **BBC** here!

<https://www.bbc.co.uk/news/uk-england-london-65526008>

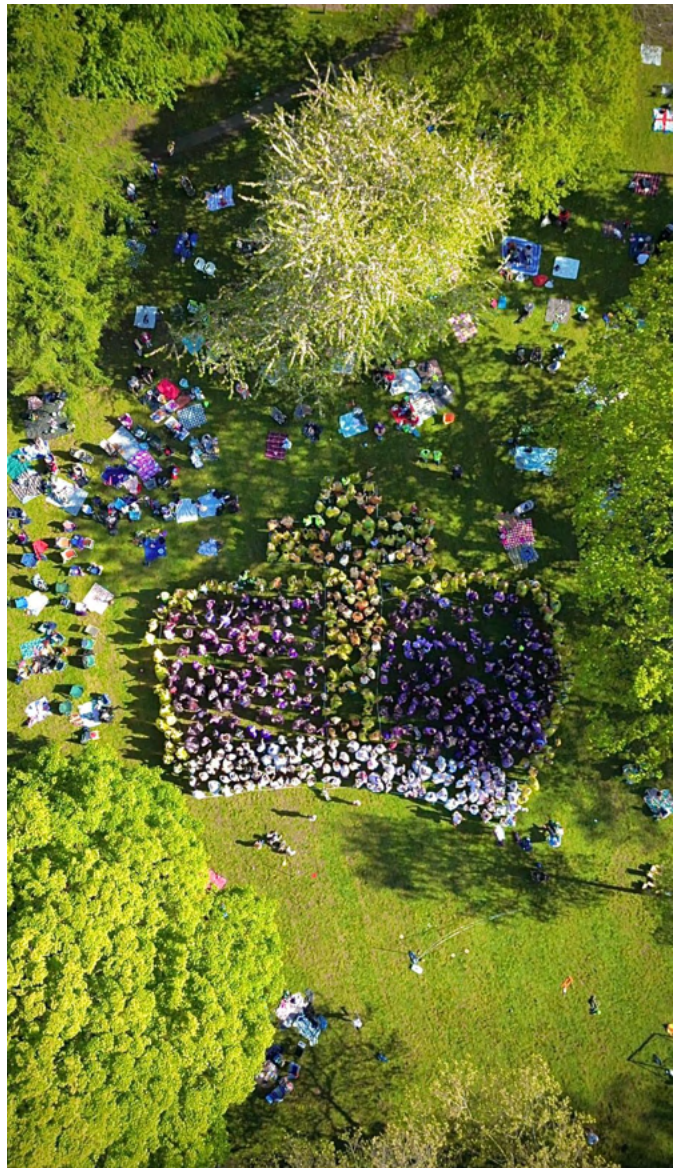
And **Sky News** here:

<https://news.sky.com/story/coronation-latest-overnight-rehearsals-give-glimpse-of-what-to-expect-as-protest-group-reveals-its-plan-12810826>

And still more.....**Evening Standard!**

[https://www.standard.co.uk/news/london/coronation-big-lunch-human-crown-world-record-attempt-orpington-london-b1079561.html?](https://www.standard.co.uk/news/london/coronation-big-lunch-human-crown-world-record-attempt-orpington-london-b1079561.html?utm_medium=Social&utm_source=Twitter#Echobox=1683559563-2)

[utm_medium=Social&utm_source=Twitter#Echobox=1683559563-2](https://www.standard.co.uk/news/london/coronation-big-lunch-human-crown-world-record-attempt-orpington-london-b1079561.html?utm_medium=Social&utm_source=Twitter#Echobox=1683559563-2)



GREENER AND CLEANER

May was a fabulous month of bank holidays and events. The Hub had a record number of visitors to make homemade bunting and celebrate the coronation in a more sustainable way. We're hosting a clothes swap on 11th June so it's all go with preparations for that now. With lots more events coming up make sure you keep an eye on www.greenerandcleaner.co.uk/events for the hot tickets!

Parisa was interviewed by The Glades about what we do and to encourage more people to visit The Hub. You can read the full interview here: <https://www.theglades.co.uk/journals/a-chat-with-the-founder-of-greener-cleaner-parisa-wright>

SUSTAINABLE FASHION PROJECT

With various start dates from the autumn term onwards, our Youth Outreach Team have been delivering the sustainable fashion project to six schools in Bromley and Greenwich. During May the schools came together for the students' final fashion show hosted by Greener and Cleaner at Coopers School.

The students have been learning key skills to upcycle and extend the life of their clothes. Extending the life of clothing can lower its carbon footprint by up to 30% depending on the type of material and item of clothing. The students were creative, learning practical skills and leadership skills.

There were some stunning outfits on show. These students really are leading the way when it comes to changing fashion habits.



SCHOOLS TRIP PILOT

The Hub hosted the first few pilot school trips and received some fantastic feedback from Valley Primary School: "Overall, it was a brilliant day and we would go back in a heartbeat and we would recommend it to the other year groups in our school".

With a solid package of options already formulated, we are looking into how we can expand this trial work with schools and are seeking corporate and charitable funding to facilitate more. If you have any leads you can suggest it would be appreciated. Send your ideas to info@greenerandcleaner.co.uk or pop into The Hub.

We intend school trips to be on offer for the next academic year (2023-24), keep an eye out for future updates if you have a school or youth organisation that would be interested.



COMMUNITY ALLOTMENT AND GARDEN

An industrious team of volunteers have just started work on the new Greener and Cleaner Community Garden and Allotment. They are currently cleaning and planning what they will be doing in the space.

Jorge popped us an update: "One of the goals is to compost all green waste from the lot so we could use 3-5 pallets to start with and would like them to ideally be the same size and natural colours (not red or blue ones).

WANTED

3-5 PALLETS
6 FENCE POSTS
VOLUNTEERS



We will be also looking to have raised beds and many plants, repurposing anything we can find to avoid it going to waste.

Thanks in advance and we'll be keeping you posted with the progress!"

They're also looking for six, 6ft fence posts in good condition (not rotted). To join the volunteers or offer any items or equipment for repurposing please email:

info@greenerandcleaner.co.uk

PS If you haven't seen the Greener and Cleaner postbox topper in The Glades yet, swing by! Released in celebration of World Bee Day on 20th May, our talented crochet queen bee has created an eye catching design to highlight the benefits of bees and what we can do to help them.



FUNDRAISING

After the success of the Big Give Green Match Fund in April, we wanted to let you know that Greener and Cleaner are on the Co-op Local Community Fund until October 2023 and have easyfundraising set up too. If you shop at Co-op stores or with their other products and services, you can select Greener and Cleaner as your local cause. As you go about your normal shopping with Co-op you'll be fundraising for Greener and Cleaner. Co-op donate 2p for every pound you spend and you earn the same in your Co-op member account too! Select Greener and Cleaner as your local cause today: www.coop.co.uk/membership.

Easyfundraising works like Amazon Smile used to (don't shoot the messenger for mentioning Amazon though!) When you do need to buy new, you shop with the brands you want on easyfundraising and they donate to the cause of your choice. For more information and to shop when you need, visit: <http://efraising.org/CHBD8hr6q0>.



PLASTIC FREE CHALLENGE

Greener and Cleaner want to challenge you ahead of plastic-free July - what can you change to reduce your use of single-use plastics and go plastic-free? Our little green helper made a great video highlighting some of the ways you can reduce plastic on a day out. With half term (and here's hoping for some great weather) on the way it's well worth a watch:

<https://youtu.be/C3ulojgTOQ4>

Greener and Cleaner have some great tips on their website for more ways you can reduce the plastic in your life too:

<https://www.greenerandcleaner.co.uk/get-greener/at-home/going-plastic-free/>

Give the challenge a go and feel free to share your successes on Greener and Cleaner's social media.



The Hub from Greener and Cleaner

Your community-powered space offers support with greener and cleaner more sustainable living.

Opening times

10am - 6pm: Monday, Thursday, Friday and Saturday.

11am - 5pm: Sunday.

Pop in for a chat with our volunteers, more ideas and to see what activities are on.

www.facebook.com/TheHubGreenerCleaner or

www.greenerandcleaner.co.uk/events



All events are free unless stated otherwise but a voluntary donation is always welcome!

Join an event at the Hub!

Event	Date
Knitting and Crochet Group	Every Monday 12-14:00
Mending Clinic	Every Saturday 12-14:00
Knit and Crochet Social Community Group	Forth Thursday every month 18:30 including 22 June.
Stitch it don't ditch it - Social Mending Session	Last Sunday of the Month, including 25 June, 14:00
Become a volunteer and make a difference!	1, 12, 15, 25 June, 6, 10, 20, 30 July. See Events Page for times.
Celebrate Children's Day by Painting a T-Shirt or Tote Bag	Thursday 1 June, 14:00
Make a Pin Cushion Brooch	Friday 2 June, 10.15
Make your Initial in Pom Poms	Friday 2 June, 14:30
Art From Plastic Workshop	Saturday 3 June, 14:00
Reusable Nappies Workshop and more!	Thursday, June 8 10:30
Kids Crochet Workshop	Second Thursday of the Month including 8 June 16:00
Clothes swap hosted by Greener and Cleaner	Saturday 11 June 14:00-16:00
Kids Knitting Workshop	Last Thursday of the Month, including 22 June 16:00
Make a shopping bag from a broken umbrella	Friday 23 June 11:00 - 13:00



PLEASE LEAVE US A GOOGLE REVIEW



If you have a spare minute, please could you leave us a review on Google? If you've visited The Hub, received some great advice in our Facebook group, or picked up a tip or two from our social media or newsletter updates here, please could you leave us a review on Google? It helps funders get to know us and other people start their climate journey too. Thanks in advance for your support! <https://g.page/r/CappVik0oXKtEBM/review>

OTHER NEWS

SOCIAL MEDIA

Over here at BEN we are working hard to make us more accessible, so we are pleased to announce that our Facebook page is now live! Please come and give us a like and a share to help keep spreading the good work of BEN members. And do send us a message to like your own Facebook pages!

Click here:  www.facebook.com/BromleyEnvironmentNetwork



COMING SOON!

Watch this space for our new website and other social media accounts

HIGH STREET LATES: A FESTIVAL OF SPORT AND WELLBEING



The London Borough of Bromley in collaboration with Pro-Active Bromley and Your Bromley BID, are set to create an exciting and inclusive Festival of Sport and Wellbeing on Bromley High Street as part of Bromley's Night Time Enterprise programme – BR1 Lates.

On Tuesday 25th July from 4pm - 9pm, Bromley Town Centre will be brought to life for the evening. The event aims to demonstrate that Bromley is a vibrant and exciting place to enjoy evenings out and showcase the different ways the community can get active and healthy.

This fun and unique event will consist of a number of temporary pop-up sporting activities, food vans, silent disco, live music and much more!

The event also aims to promote active travel and encourages local residents to walk or cycle to the event if possible, as well as offering smoothie bikes, a heritage walk and bike marking from local Police cadets.

For more information, please visit:
www.bromley.gov.uk/br1lates

BROMLEY PARKS EVENTS



Half Term Events

at BEECHE – High Elms

Bees and friends

Learn about the amazing relationship between these bugs and flowers

Tuesday 30th May
12:00-13:30
£5 per Child
Suitable for all ages

Toddler Pond Dip

Explore the freshwater pond at High Elms! All equipment will be provided.

Tuesday 30th May
10:00 - 11:00
£5 per Child
TODDLERS ONLY!

Eco Crafts

Create some Eco crafts in this creative arts session! All materials will be provided!

Wednesday 31st May
13:00-14:30
£6 per child
suitable for 4+

Pond Dipping

Explore the freshwater pond at High Elms! All equipment will be provided.

Wednesday 31st May
10:30-11:30
£5 per Child
suitable for 5+

Big Bug Hunt

Create a simple DIY bug hotel and discover mini-beasts in our woodland.

Thursday 1st June
11:00-12:30
£5 per Child
suitable for 4+

Junior woodland Walk

Learn about the magic of woodlands, it's support for many different habitats and thousands of different species.

Thursday 1st June
13:00-15:00
£3 per Person
suitable for 8+

Discover Herbs

Learn all about herbs and decorate your own plant pot to grow herbs in at home!

Friday 2nd June
11:00-12:00
£6 per Child
suitable for 5+

Magical tree trail

Explore our woodlands and discover the magic of trees!

Friday 2nd June
14:00-15:30
£5 per Child
suitable for 5+

Visitors Center

Please pop into our visitors centre in half term and learn more about our amazing Park and discover more about the history of the estate.

open daily Mon-Fri



Parents/carers to stay with their children while they participate in activities
- no need for adults to buy a ticket!

Please book on at: www.bromleyparks.co.uk or call 01689 860 571



Ranger Events at Bromley Parks



Bird Ecology and Biology

May 20th
High Elms Country Park
10:30-12:00
£5pp
Suitable for 13+

Bird of Prey talk (Raptors)

June 10th
High Elms Country Park
10:30-12:00
£3pp
suitable for 6+

Butterfly ID course

June 20th
Short course
High Elms Country Park
10:00-12:30
suitable for ages 16+
£10 pp

Orchid Walk and Talk

22nd May
High Elms Country Park
13:00-15:00
£3pp
suitable for all ages
no dogs allowed

Habitat walk at Keston Common

26th June
Keston Common
13:30-15:30
£3pp
suitable for all ages

Woodland Habitat walk at Hoblingwell woodlands

6th June
13:30-15:00
£3pp
suitable for ages 16+

Woodland Walk at Jubilee Country Park

23rd May
13:00-14:30
£3pp
suitable for all ages

Woodland Walk at Scadbury Park

18th May
13:00-15:00
£3pp
suitable for all ages
dogs welcome

Woodland Birds walk and talk

8th July
High Elms Country Park
10:00-11:30
£3pp
suitable for all ages



Please book on at:
www.BromleyParks.co.uk
or call 01689 860 571



GLOBAL WARMING ACTION PAPER

For a very interesting read you can head over to our shared drive <https://tinyurl.com/bromleyenvir> for a paper on Global Warming and Resource Depletion by John Pavitt. John volunteers for Bromley Friends of the Earth, however this paper was written independently of them for the Chartered Institution of Waste Management. Read John's detailed report using his knowledge and experience on actions that can be taken to tackle climate change and increase sustainability, or you can read the shorter action point document also within the drive.

SHORTLANDS MARKET

Visit BEN Member Greener
and Cleaner's stall on
4th June 2023
11am-4pm



I ❤️

EST 2021
SHORTLANDS
• MARKET •

Summer Market

4th June 2023
11am-4pm

Valley Primary
Beckenham Ln,
Bromley BR2 0DA

No entry fee and dogs on leads welcome!

Hot food and drinks, fresh produce, candles,
plants, homeware, fashion and gifts

USEFUL INFORMATION

JOIN THE NETWORK

The Bromley Environment network brings together community groups from across Bromley Borough.

We aim to share information, inspire and support local people, fellow community groups, and the Council to make our borough a greener, healthier and more sustainable place to live, both now and in the future. Join us for FREE online:-

<https://membermojo.co.uk/ben>



Do make sure you hit this final button to ensure your sign up is complete.

Payment

No payment is required

Click **Free Checkout** to complete this purchase.

Free Checkout

DOWNLOAD PAST NEWSLETTERS

This newsletter as well as previous copies, can be downloaded from a Google folder – you can access this using the shortened link: <https://tinyurl.com/bromleyenvir>

NEWSLETTER DEADLINE

We would love to hear what network members have been up to.

Please email your articles by **15 June 2023**. Any events included should be for **01 July 2023** onwards.

MAKE A DONATION

We hope that you have enjoyed this newsletter. If you were interested in making a donation to help fund future issues, then please contact us at bromleyenvironmentnetwork@gmail.com

DATES FOR YOUR DIARY

1st—30th June: 30 Days Wild

<https://www.wildlifetrusts.org/30dayswild>

30 Days Wild, run by The Wildlife Trust, is the UK's biggest nature challenge. Here, people are invited to sign-up and try one 'random act of wildness' every day, for 30 days in June.

1st, 12th, 15th and 25th June: The Hub Workshop - Become a Volunteer and make a difference! (See Page 15)

1st June: Big Bug Hunt - High Elms 11.00 (See Page 17)

1st June: Junior Woodland Walk - High Elms 13.00 (See Page 17)

1st - 7th June: National Volunteer Week

A whole week dedicated to people we couldn't do without! National Volunteering Week is a great time to say thank you to those who have supported you throughout the year and also attract more volunteers. For more information about the national campaign visit: <https://volunteersweek.org/>

1st June: The Hub Workshop - Celebrate Children's Day by Painting a Tshirt or Tote Bag 14:00 (See Page 15)

2nd June: Discover Herbs - High Elms 11.00 (See Page 17)

2nd June: Magical Tree Trail - High Elms 14.00 (See Page 17)

2nd June: The Hub Workshop - Make a Pin Cushion Brooch 10:15 (See Page 15)

2nd June: The Hub Workshop - Make your Initial in Pom Poms 14:30 (See Page 15)

3rd June: World Bike Day <https://www.un.org/en/observances/bicycle-day>

3rd June: In Common - On the Common. Betts Park Guided Walk 11.00 and 14.00 (See Page 5)

3rd June: The Hub Workshop - Art from Plastic 14:00 (See Page 15)

4th June: Shortlands Market - Visit the Greener and Cleaner stall (See Page 19)

5th June: World Environment Day <https://www.worldenvironmentday.global/>

5th - 11th June: Garden Wildlife Week

Celebrates the animals and ecosystems found in gardens and encourages supporting them

6th June: Woodland Habitat walk at Hoblingwell Woodlands 13.30 (See Page 18)

6th - 12th June: National Growing for Wellbeing Week

8th June: The Hub Workshop - Reusable Nappies Workshop and More! 10:30 (See Page 15)

8th June: The Hub Workshop - Kids Crochet Workshop 16:00 (See Page 15)

8th June: World Ocean's Day <https://unworldoceansday.org/>

8th to 15th June: Bike Week <https://www.cyclinguk.org/bikeweek>

Encouraging as many people as possible to get out there and enjoy their community by bike.

10th June: In Common - On the Common. Betts Park Guided Walk 11.00 and 14.00 (See Page 5)

10th June: Bird of Prey Talk - High Elms 10.30 (See Page 18)

10th - 18th June: The Great Big Green Week <https://greatbiggreenweek.com/>

11th June: Greener and Cleaner Clothes swap event (See Page 15)

<https://www.eventbrite.com/e/swapping-not-shopping-clothes-swap-event-at-the-hub-tickets-641381448177>

15th June: Bromley Living Streets online webinar - Clean Air Day (See Page 10)

13th June: National Sewing Machine Day (a British invention!)

15th June: Clean Air Day <https://www.actionforcleanair.org.uk/campaigns/clean-air-day>

15th June: Global Wind Day <https://globalwindday.org/>

16th June: World Refill Day <https://www.refill.org.uk/world-refill-day/>

17th June: World day to combat desertification and drought

<https://www.unccd.int/events/desertification-drought-day/2023>

17th June: Plastic-Free Beauty Day <https://www.plasticfreebeauty.org/>

at the time of writing sadly not updated from 2022, but some good information nonetheless.

17th June: In Common - On the Common. Betts Park Guided Walk 11.00 and 14.00 (See Page 5)

18th June: Sustainable Gastronomy Day

<https://www.un.org/en/observances/sustainable-gastronomy-day>

19-25th June: Insect Week <https://www.royensoc.co.uk/event/insect-week-2023/>
<https://www.insectweek.org/>

20th June: Butterfly ID course 10.00 (See Page 18)

22nd June: The Hub Workshop - Kids Knitting Workshop 16:00 (See Page 15)

22nd June: The Hub Workshop - Knit and Crochet Social Community Group 18:30 (See Page 15)

22nd June: World Rainforest Day <https://www.worldrainforestday.org/>

23rd June: The Hub Workshop - Make a shopping bag from a broken umbrella 13:00 (See Page 15)

24th June: In Common - On the Common. Betts Park Guided Walk 11.00 and 14.00 (See Page 5)

24th June: KESTFEST - Keston Village Festival (See Page 8)

24th June - 2nd July: London Climate Action Week <https://www.londonclimateactionweek.org/>

24th June: Contingent Works Handmade Craft Fair, catch Greener and Cleaner's Charlotte upcycling workshops, turning denim into jewellery and other items, make and take home your own.

25th June: The Hub Workshop - Stitch it don't ditch it—Social Mending Session 14:00 (See Page 15)

26th June: Habitat walk at Keston Common 13.30 (See Page 18)

6th, 10th, 20th, 30th July: The Hub Workshop - Become a Volunteer and make a difference! (See Page 15)

8th July: Woodland Birds Walk and Talk 10.00 (See Page 18)

25th July: Celebration of Sport Event - London Borough of Bromley 16.00-21.00 (See Page 16)